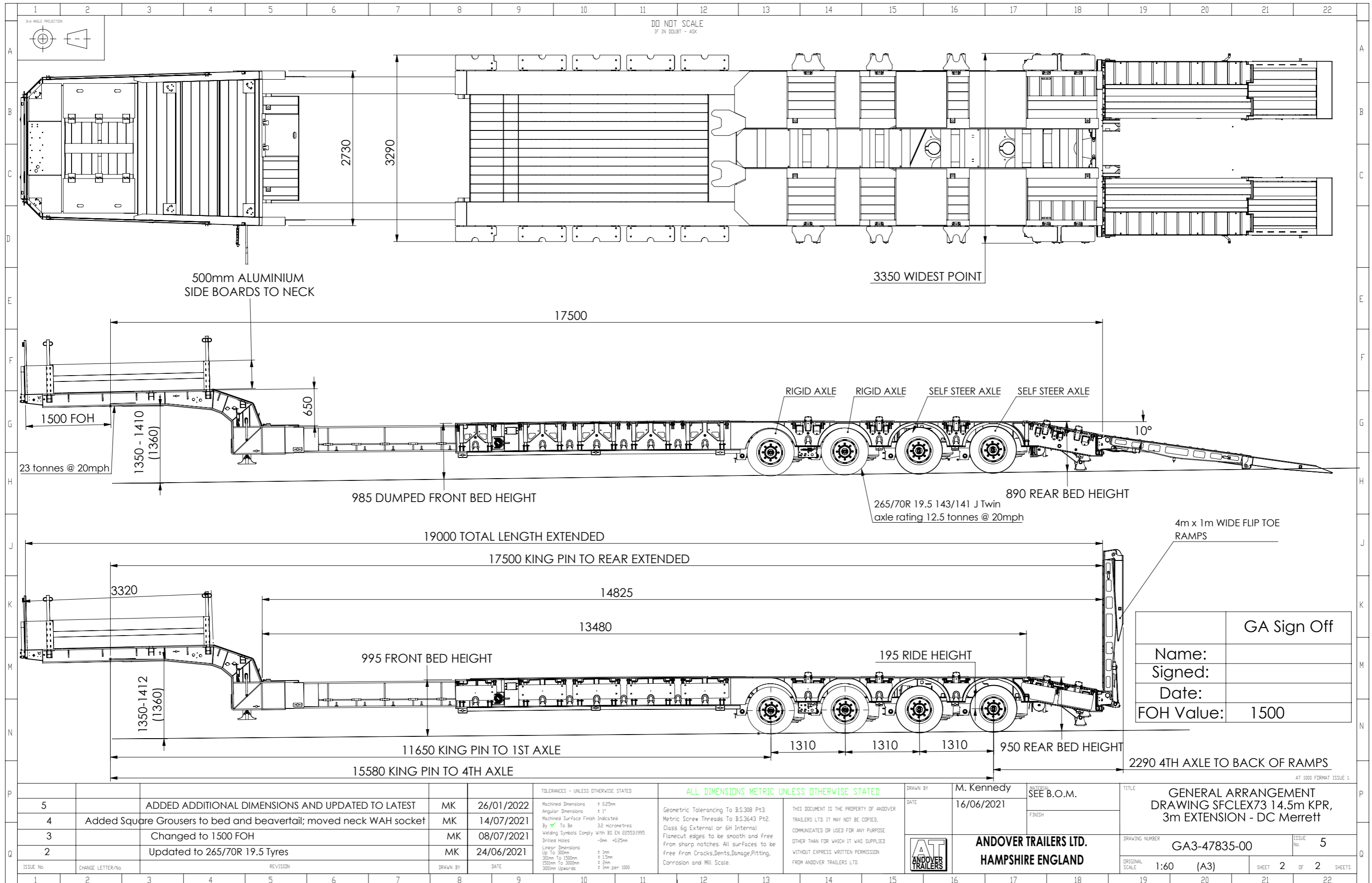


ISSUE No.	CHANGE LETTER/No.	REVISION	DRAWN BY	DATE
5		ADDED ADDITIONAL DIMENSIONS AND UPDATED TO LATEST	MK	26/01/2022
4		Added Square Grousers to bed and beavertail; moved neck WAH socket	MK	14/07/2021
3		Changed to 1500 FOH	MK	08/07/2021
2		Updated to 265/70R 19.5 Tyres	MK	24/06/2021

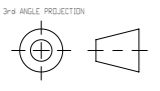
TOLERANCES - UNLESS OTHERWISE STATED		ALL DIMENSIONS METRIC UNLESS OTHERWISE STATED	
Machined Dimensions	± 0.25mm	Geometric Tolerancing	To B.S.308 Pt3.
Angular Dimensions	± 1°	Metric Screw Threads	To B.S.3643 Pt2.
Machined Surface Finish	Indicated	Class 6g External or 6H Internal	
By ✓ To Be	32 micrometres	Flamecut edges to be smooth and free	from sharp notches. All surfaces to be
Welding Symbols Comply With	BS EN 22553:1995	free from Cracks, Dents, Damage, Pitting,	Corrosion and Mill Scale.
Drilled Holes	-0mm +0.25mm		
Linear Dimensions			
Up To 300mm	± 1mm		
301mm To 1500mm	± 1.5mm		
1501mm To 3000mm	± 2mm		
3001mm Upwards	± 3mm per 1000		

DRAWN BY	M. Kennedy	MATERIAL	SEE B.O.M.
DATE	16/06/2021	FINISH	
		<b>ANDOVER TRAILERS LTD.</b> <b>HAMPSHIRE ENGLAND</b>	

TITLE		GENERAL ARRANGEMENT DRAWING SFCLEX73 14.5m KPR, 3m EXTENSION - DC Merrett	
DRAWING NUMBER	GA3-47835-00	ISSUE No.	5
ORIGINAL SCALE	1:55 (A3)	SHEET	1 OF 2 SHEETS



DO NOT SCALE  
IF IN DOUBT - ASK



500mm ALUMINIUM  
SIDE BOARDS TO NECK

3350 WIDEST POINT

17500

RIGID AXLE RIGID AXLE SELF STEER AXLE SELF STEER AXLE

1500 FOH  
23 tonnes @ 20mph

1350 - 1410  
(1360)

985 DUMPED FRONT BED HEIGHT

265/70R 19.5 143/141 J twin  
axle rating 12.5 tonnes @ 20mph

890 REAR BED HEIGHT

19000 TOTAL LENGTH EXTENDED

17500 KING PIN TO REAR EXTENDED

4m x 1m WIDE FLIP TOE  
RAMPS

3320

14825

GA Sign Off	
Name:	
Signed:	
Date:	
FOH Value:	1500

995 FRONT BED HEIGHT

195 RIDE HEIGHT

1350-1412  
(1360)

11650 KING PIN TO 1ST AXLE

1310 1310 1310

950 REAR BED HEIGHT

15580 KING PIN TO 4TH AXLE

2290 4TH AXLE TO BACK OF RAMPS

TOLERANCES - UNLESS OTHERWISE STATED	
Machined Dimensions	± 0.25mm
Angular Dimensions	± 1°
Machined Surface Finish Indicated	
By To Be	32 micrometres
Welding Symbols Comply With	BS EN 22553:1995
Drilled Holes	-0mm +0.25mm
Linear Dimensions	
Up To 300mm	± 1mm
301mm To 1500mm	± 1.5mm
1500mm To 3000mm	± 2mm
3000mm Upwards	± 3mm per 1000

**ALL DIMENSIONS METRIC UNLESS OTHERWISE STATED**

Geometric Tolerancing To B.S.308 Pt3.  
Metric Screw Threads To B.S.3643 Pt2.  
Class 6g External or 6H Internal.  
Flamecut edges to be smooth and free from sharp notches. All surfaces to be free from Cracks, Dents, Damage, Pitting, Corrosion and Mill Scale.

THIS DOCUMENT IS THE PROPERTY OF ANDOVER TRAILERS LTD. IT MAY NOT BE COPIED, COMMUNICATED OR USED FOR ANY PURPOSE OTHER THAN FOR WHICH IT WAS SUPPLIED WITHOUT EXPRESS WRITTEN PERMISSION FROM ANDOVER TRAILERS LTD.

DRAWN BY M. Kennedy  
DATE 16/06/2021

MATERIAL SEE B.O.M.  
FINISH

TITLE GENERAL ARRANGEMENT  
DRAWING SFCLEX73 14.5m KPR,  
3m EXTENSION - DC Merrett



**ANDOVER TRAILERS LTD.**  
**HAMPSHIRE ENGLAND**

DRAWING NUMBER GA3-47835-00  
ISSUE No. 5

ORIGINAL SCALE 1:60 (A3)  
SHEET 2 OF 2 SHEETS